



What is stormwater?

Stormwater is rainwater or melted snow. When rain or snow falls on soft (pervious) surfaces like open fields, forests or grass, some or all of the water absorbs into the ground. But when water falls on hard (impervious) surfaces like streets, parking lots and rooftops, the water can't absorb into the ground, and it runs off the surface. Runoff usually ends up in ditches or storm sewer pipes which carry it to creeks and rivers. Developed areas (such as towns and cities) tend to have a lot of impervious surfaces, and these areas generate more runoff than natural ground cover like forest or grasslands.

Why is stormwater management important?

As stormwater runs across impervious surfaces, it picks up substances that might be on the ground such as fuels, oils, dust from brake pads, animal waste, or other debris like sediment and leaves. These substances contain pollutants that are harmful to our local creeks and rivers. Too much of these pollutants can hurt aquatic wildlife, cause foul odors, and even result in human illness when we use the creeks and rivers for recreation. Keeping our stormwater clean helps keep our creeks and rivers healthy, ensuring they remain a valuable asset for us and future generations.

Additionally, if not managed properly, stormwater runoff can accumulate and cause erosion or flooding. Effective stormwater management helps public works departments maintain pipes and ditches so that the drainage system is safe and allows for appropriate asset maintenance and long-term planning.

What is East Liverpool doing to help keep stormwater clean?

Most of the stormwater runoff in East Liverpool flows to the Ohio River, and the City has a permit from the Ohio Environmental Protection Agency that allows stormwater to flow to the river. This permit is called a MS4 permit and it includes a wide range of requirements to help keep stormwater clean. The City is working on programs to minimize stormwater pollution by mapping the location of the City's stormwater pipes and outfalls, controlling sediment runoff from construction projects, using Green Infrastructure to remove pollutants in stormwater before it reaches the river, making sure sewage from human waste is not getting mixed into stormwater pipes, and making sure road salts, pesticides, and other chemicals are not spilling into storm drains.

Municipal Separate Storm Sewer System Facts

Scan the code to visit
the website:
eastliverpoolstormwater.com



What does MS4 stand for?

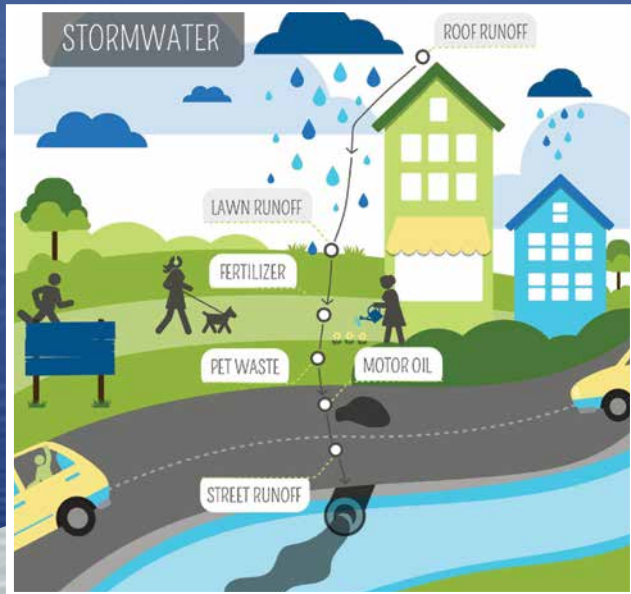
MS4 stands for “Municipal Separate Storm Sewer System”, where the word “Municipal” refers to a local government like East Liverpool and the number 4 refers to the four words that start with the letter “S”: “Separate”, “Storm”, “Sewer”, “System”.

A separate storm sewer system is a collection of structures, such as pipes, ditches, and roadside inlets designed to collect stormwater and discharge it into local creeks and rivers.

The word separate means it is not connected to the sanitary sewer system which collects human wastewater from inside a home and sends it to a sewage treatment facility or a private septic system.

How can I get involved?

Sign up for updates on the City’s MS4 website and look for opportunities to participate in stormwater activities in the future!



126 W. 6th St. | East Liverpool, OH 43920

CORRECT
INDICIA
WILL BE
ADDED BEFORE
PRINTING